



COMPANY PROFILE

WWW.SEAPROAFRICA.COM



SEAPRO
Engineering that WORKS

WHO WE ARE

We are a leading engineering solutions provider in Botswana, specializing in the Mining, Water, and Power market sectors. We have established strong and healthy relationships with all key players in these sectors. Seapro™ has a remarkable history of consistent growth and sustainability, starting from humble beginnings..

Company History

Seapro™ was established in 2002, is citizen-owned and is a 100% Botswana-born and built company.



OUR VALUES



CUSTOMERS ARE OUR
PRIORITY



TO DO THINGS
RIGHT FIRST TIME



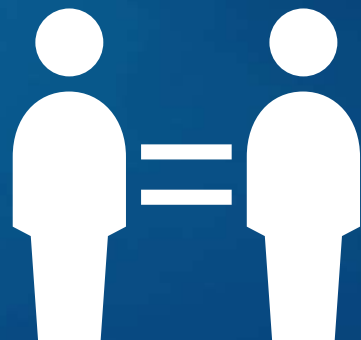
CONTINUOUS
PROGRESS



OUR INTEGRITY IS
NOT FOR SALE



QUALITY IS A
NON-NEGOTIABLE



WE VALUE
EACH OTHER



MAKING LIFE BETTER
AROUND US



WHAT WE DO...



We deal with warranties & guarantees

We have the support infrastructure

Our teams are trained and certified by OEMs.

We have the appropriate technical competencies

We can provide training for our customer's staff

Design & Commissioning

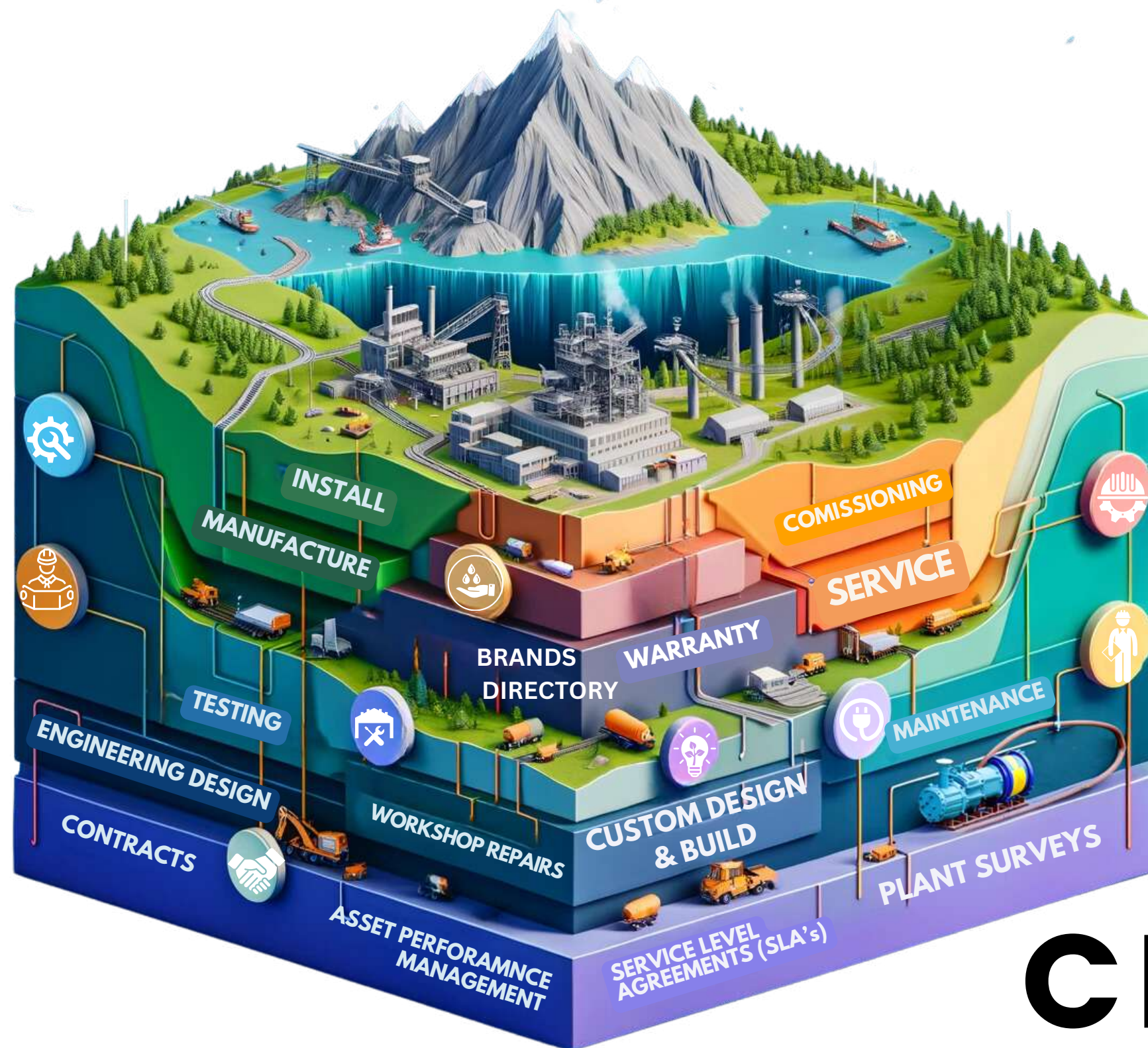
Fully accredited Workshop

Product application solutions

Warranty Support

Priority 1 Breakdowns

For over two decades, Seapro has solidified its foundation in Botswana's engineering sector, with a track record of **21+ years of proven longevity**. With partners whose combined gross turnover exceeds **P 690 billion (+-\$60 billion) annually as of 2020**; our capacity is vast, our expertise deep. We provide a **full support ecosystem** to ensure those who trust us with their visions and future builds see them realized sustainably, ultimately making life better for all.



Product
Directory



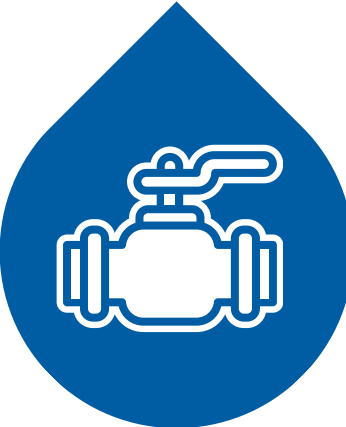
Scan me

CREATING VALUE

DISTRIBUTION ECO SYSTEM

PRODUCTS

PUMPS | VALVES | MOTORS
ALL ASSOCIATED SCOPES



SERVICES

CONTRACTS | ASSET P.M | SLA's | TESTING
REPAIRS & SERVICING | COMMISSIONING | SURVEYS
CUSTOMIZATIONS | DESIGNING



SYSTEMS

AUTOMATION | MECHANICAL
ELECTRICAL | TREATMENT





VALUE CREATION

A JOURNEY TAKEN TOGETHER, TO ACHIEVE GREAT THINGS

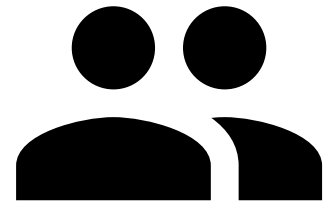


PUMPS | VALVES | MOTORS

Our production-critical products require immediate customer support. To fulfil this, we have trained and technically qualified teams of customer support and service personnel.

SERVICE & REPAIR

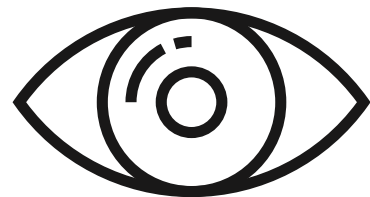
We have an in-house pump, valve and motor repair and testing facility that helps us ensure that our customers receive the best possible aftermarket support for their purchased products.



FRD afforded 30 more Botswana citizens an opportunity to work over a 12 month period



Enabled Strategic Associations – Bigen for Design and access to the highest levels of support from represented organisations resulting in the continuous development of our teams skills and capabilities – empowerment is a key to our future



The Vision to become an INTEGRATED SOLUTIONS PARTNER was established upon this foundation.





PLANT RELOCATION

SCOPE

- Design and Construction of a Compressor house facility
- Relocation of Kaesar compressors
- Relocation of Nitrogen generators
- Commissioning of relocated machines.

YEAR
2014



Description: Relocation of Nitrogen and compressed air services

PIPE BRIDGE MANUFACTURE

CLIENT CHALLENGE

The client faced significant challenges in obtaining precise flow meter readings, particularly during instances of low pipe flow. This accuracy issue was a critical concern, impacting their operational efficiency and data reliability.

SEAPRO'S SOLUTION

To address this, Seapro designed a bridge system. This solution ensures a continuous full-bore flow, thereby greatly enhancing the accuracy of measurements. The design not only resolves the client's immediate problem but also offers a sustainable and reliable method for future flow metering needs.

BRAND USED

ABB



SCOPE

Design, Manufacture and supply of a DN300 flow meter pipe.

PUMP ALIGNMENT

CLIENT CHALLENGE

The client faced the significant challenge of ensuring accurate and precise alignment of their equipment. Achieving this was crucial for reducing or completely eliminating the mechanical stress caused by misalignment, which was impacting the efficiency and longevity of their machinery.

SEAPRO'S SOLUTION

Seapro utilized a state-of-the-art, specialist laser alignment system. This manufacture enabled precision in equipment alignment, effectively reducing mechanical stress. The solution resolved the immediate alignment issues , as well as enhancing long-term operational efficiency and machinery durability.



BRAND USED
WEG

SCOPE

Pump & motor alignment | Soft foot correction
Pipe stress correction | Cold commissioning | Hot commissioning

CUSTOM TRAILER

CLIENT CHALLENGE

The client required a solution for the speedy operation of removing and re-installing pit depressurization borehole pump equipment. This process was essential to be conducted quickly and efficiently before and after blasting operations, aiming to significantly reduce downtime and enhance operational efficiency.

SEAPRO'S SOLUTION

Seapro responded to this challenge by designing and engineering a self-contained, truck-drawn trailer. This custom-designed solution allows for the fast retrieval, transport, and installation of the borehole pump equipment.

BRAND USED
DYMOT
ATLAS COPCO



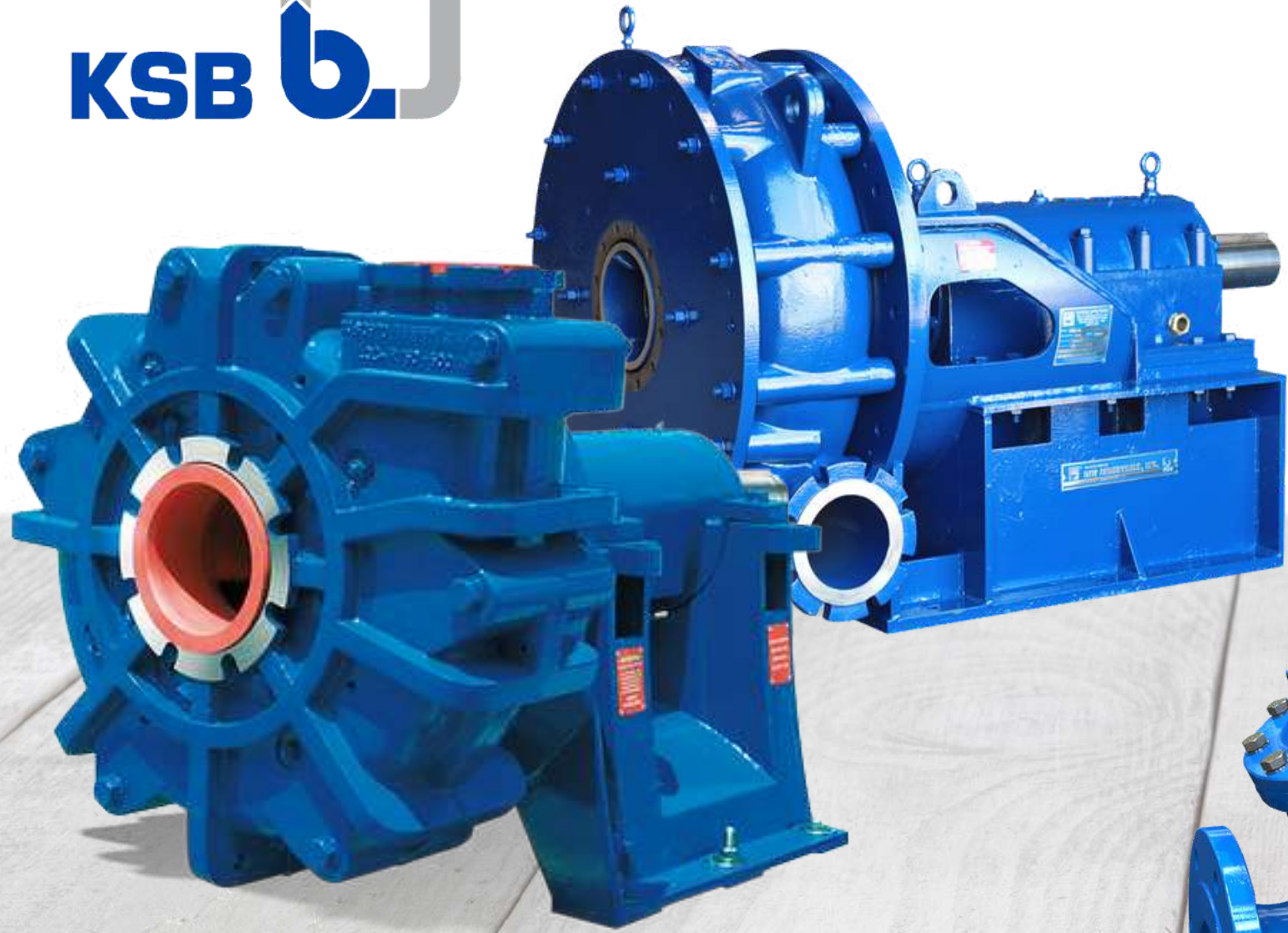
SCOPE

Design, engineering, Fabrication, supply, of heavy-duty borehole pump and piping retrieval and installation trailer.



GLOBAL LEADERS

IN PUMPS, VALVES, MOTORS AND RELATED PRODUCTS



OUR BRANDS



MACSTEEL
FLUID CONTROL

DFC DYNAMIC
FLUID CONTROL



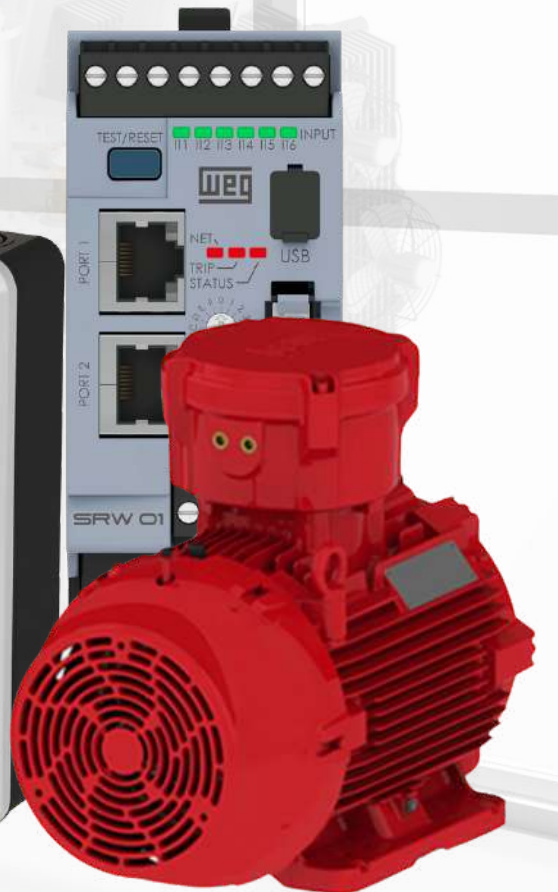
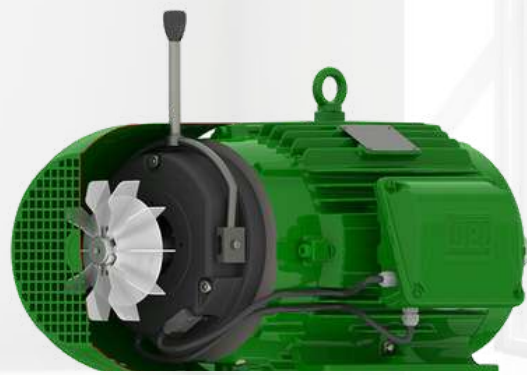
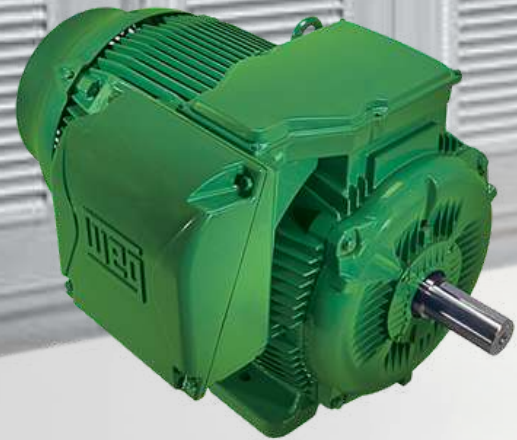
bürkert
FLUID CONTROL SYSTEMS



KSB 



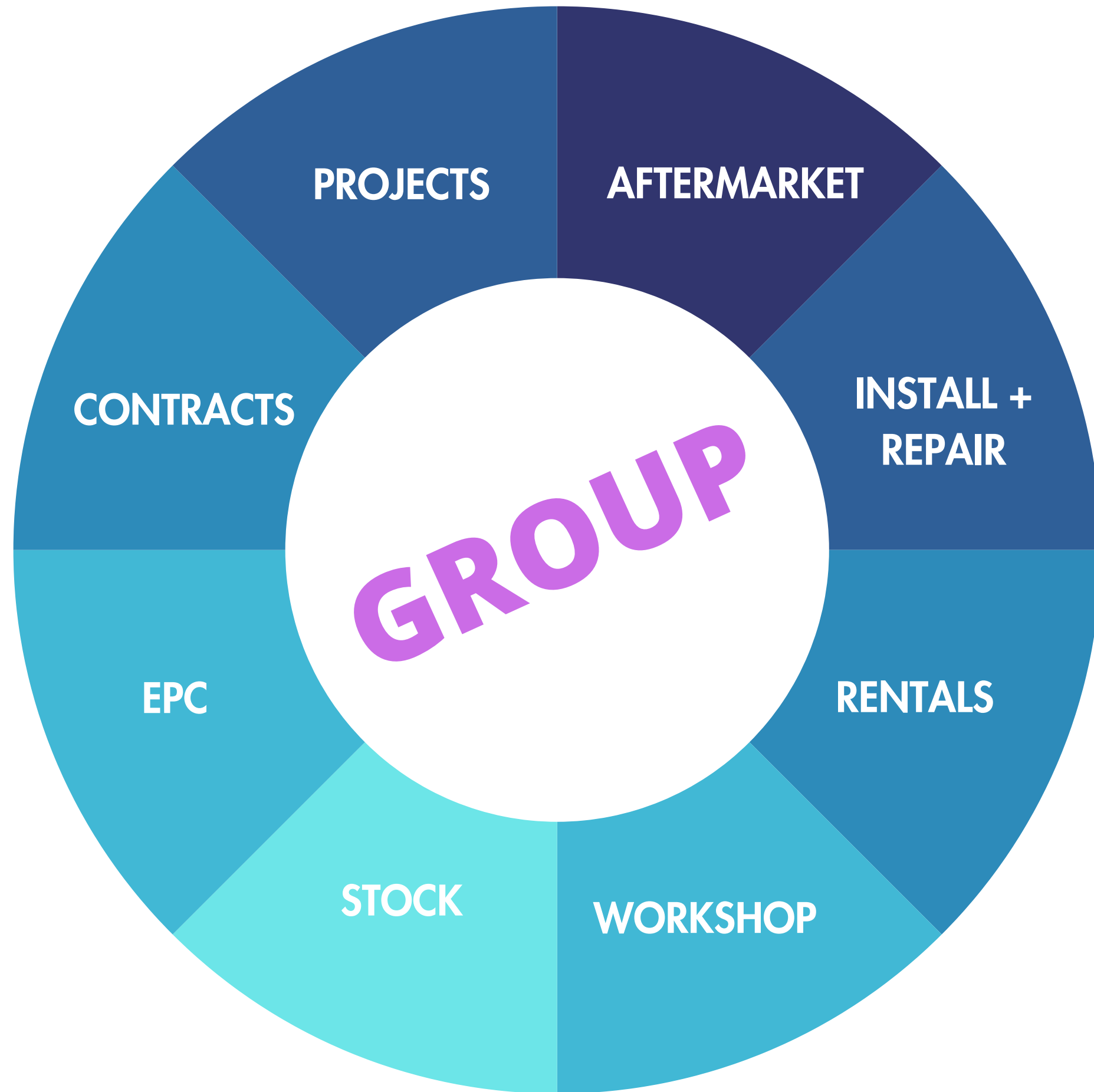
OUR BRANDS





OUR GROUP

WWW.SEAPROAFRICA.COM



SEAPRO

Engineering that WORKS

PRODUCTS | SYSTEMS | SOLUTIONS



AIRSYSTEMS

Engineering that WORKS

AIR | ELECTRIFICATION | AUTOMATION



SEAPRO

TRAINING | DEVELOPMENT | WORKSHOPS

Contact Us

Our passion is to bring Vision & Value Creating Solutions to our customers, by working with them to see their visions realised.

2024

Contact Numbers

Gaborone: +267 397 4861
Francistown: +267 241 8759

Head Office - Gaborone
Plot 72, Tlokweng - Gaborone
Botswana

